

Preliminary

號碼(No.) : CE/2014/44950 日期(Date) : 2014/04/30 頁數(Page) : 1 of 14

南亞塑膠工業股份有限公司
NAN YA PLASTICS CORPORATION
新北市泰山區南林路102號
NO. 102, NANLIN ROAD, TAISHAN DIST., NEW TAIPEI CITY, TAIWAN



以下測試樣品係由申請廠商所提供及確認 (The following sample(s) was/were submitted and identified by/on behalf of the applicant as) :

送樣廠商(Sample Submitted By) : 南亞塑膠工業股份有限公司 (NAN YA PLASTICS CORPORATION)

樣品名稱(Sample Description) : NAN YA NON-ORIENTED CASTING POLYPROPYLENE FILM (南亞無延伸聚丙烯膜)

收件日期(Sample Receiving Date) : 2014/04/23

測試期間(Testing Period) : 2014/04/23 TO 2014/04/30

=====

測試結果(Test Results) : 請見下一頁 (Please refer to next pages).

結論(Conclusion) : 根據客戶所提供的樣品，其鎘、鉛、汞、六價鉻、多溴聯苯及多溴聯苯醚的測試結果符合 RoHS指令2002/95/EC的更新指令2011/65/EU之要求 (Based on the performed tests on submitted samples, the test results of Cadmium, Lead, Mercury, Hexavalent Chromium Cr(VI), PBBs and PBDEs comply with the limits as set by RoHS Directive 2011/65/EU Annex II; recasting 2002/95/EC.)

Preliminary

號碼(No.) : CE/2014/44950 日期(Date) : 2014/04/30 頁數(Page) : 2 of 14

南亞塑膠工業股份有限公司
NAN YA PLASTICS CORPORATION
新北市泰山區南林路102號
NO. 102, NANLIN ROAD, TAISHAN DIST., NEW TAIPEI CITY, TAIWAN



測試結果(Test Results)

測試部位(PART NAME)No.1 : 透明塑膠膜 (TRANSPARENT PLASTIC FILM)

測試項目 (Test Items)	單位 (Unit)	測試方法 (Method)	方法偵測 極限值 (MDL)	結果 (Result)	法規 限值 (Limit)
				No.1	
鎘 / Cadmium (Cd)	mg/kg	參考IEC 62321-5: 2013方法, 以感應耦合電漿原子發射光譜儀檢測. / With reference to IEC 62321-5: 2013 and performed by ICP-AES.	2	n.d.	100
鉛 / Lead (Pb)	mg/kg	參考IEC 62321-5: 2013方法, 以感應耦合電漿原子發射光譜儀檢測. / With reference to IEC 62321-5: 2013 and performed by ICP-AES.	2	n.d.	1000
汞 / Mercury (Hg)	mg/kg	參考IEC 62321-4: 2013方法, 以感應耦合電漿原子發射光譜儀檢測. / With reference to IEC 62321-4: 2013 and performed by ICP-AES.	2	n.d.	1000
六價鉻 / Hexavalent Chromium Cr(VI)	mg/kg	參考IEC 62321: 2008方法, 以UV-VIS檢測. / With reference to IEC 62321: 2008 and performed by UV-VIS.	2	n.d.	1000
砷 / Arsenic (As)	mg/kg	參考US EPA 3052方法, 以感應耦合電漿原子發射光譜儀檢測. / With reference to US EPA Method 3052. Analysis was performed by ICP-AES.	2	n.d.	-
硒 / Selenium (Se)	mg/kg	參考US EPA 3052方法, 以感應耦合電漿原子發射光譜儀檢測. / With reference to US EPA Method 3052. Analysis was performed by ICP-AES.	2	n.d.	-

Preliminary

號碼(No.) : CE/2014/44950 日期(Date) : 2014/04/30 頁數(Page) : 3 of 14

南亞塑膠工業股份有限公司
NAN YA PLASTICS CORPORATION
新北市泰山區南林路102號
NO. 102, NANLIN ROAD, TAISHAN DIST., NEW TAIPEI CITY, TAIWAN



測試項目 (Test Items)	單位 (Unit)	測試方法 (Method)	方法偵測 極限值 (MDL)	結果 (Result)	法規 限值 (Limit)
				No.1	
銻 / Antimony (Sb)	mg/kg	參考US EPA 3052方法，以感應耦合電漿原子發射光譜儀檢測。 / With reference to US EPA Method 3052. Analysis was performed by ICP-AES.	2	n.d.	-
鉻 / Chromium (Cr)	mg/kg	參考US EPA 3052方法，以感應耦合電漿原子發射光譜儀檢測。 / With reference to US EPA Method 3052. Analysis was performed by ICP-AES.	2	n.d.	-
鋇 / Barium (Ba)	mg/kg	參考US EPA 3052方法，以感應耦合電漿原子發射光譜儀檢測。 / With reference to US EPA Method 3052. Analysis was performed by ICP-AES.	2	n.d.	-
多氯聯苯 / Polychlorinated Biphenyls (PCBs) (CAS No.: 1336-36-3)	mg/kg	參考US EPA 3540C方法，以氣相層析/質譜儀檢測。 / With reference to US EPA 3540C method. Analysis was performed by GC/MS.	0.5	n.d.	-
多氯三聯苯 / Polychlorinated Terphenyls (PCTs)	mg/kg	參考US EPA 3540C方法，以氣相層析/質譜儀檢測。 / With reference to US EPA 3540C method. Analysis was performed by GC/MS.	0.5	n.d.	-
多氯萘 / Polychlorinated Naphthalene (PCNs)	mg/kg	參考US EPA 3540C方法，以氣相層析/質譜儀檢測。 / With reference to US EPA 3540C method. Analysis was performed by GC/MS.	5	n.d.	-
短鏈氯化石蠟 / Alkanes, C10-13, chloro (Short Chain Chlorinated Paraffins) (CAS No.: 85535-84-8)	mg/kg	參考US EPA 3540C方法，以氣相層析/質譜儀檢測。 / With reference to US EPA 3540C method. Analysis was performed by GC/MS.	100	n.d.	-

Preliminary

南亞塑膠工業股份有限公司



NAN YA PLASTICS CORPORATION

新北市泰山區南林路102號

NO. 102, NANLIN ROAD, TAISHAN DIST., NEW TAIPEI CITY, TAIWAN

測試項目 (Test Items)	單位 (Unit)	測試方法 (Method)	方法偵測 極限值 (MDL)	結果 (Result)	法規 限值 (Limit)
				No.1	
多溴聯苯總和 / Sum of PBBs	mg/kg	參考IEC 62321: 2008方法, 以氣相層析/質譜儀檢測. / With reference to IEC 62321: 2008 and performed by GC/MS.	-	n.d.	1000
一溴聯苯 / Monobromobiphenyl			5	n.d.	-
二溴聯苯 / Dibromobiphenyl			5	n.d.	-
三溴聯苯 / Tribromobiphenyl			5	n.d.	-
四溴聯苯 / Tetrabromobiphenyl			5	n.d.	-
五溴聯苯 / Pentabromobiphenyl			5	n.d.	-
六溴聯苯 / Hexabromobiphenyl			5	n.d.	-
七溴聯苯 / Heptabromobiphenyl			5	n.d.	-
八溴聯苯 / Octabromobiphenyl			5	n.d.	-
九溴聯苯 / Nonabromobiphenyl			5	n.d.	-
十溴聯苯 / Decabromobiphenyl			5	n.d.	-
多溴聯苯醚總和 / Sum of PBDEs			-	n.d.	1000
一溴聯苯醚 / Monobromodiphenyl ether			5	n.d.	-
二溴聯苯醚 / Dibromodiphenyl ether			5	n.d.	-
三溴聯苯醚 / Tribromodiphenyl ether			5	n.d.	-
四溴聯苯醚 / Tetrabromodiphenyl ether			5	n.d.	-
五溴聯苯醚 / Pentabromodiphenyl ether			5	n.d.	-
六溴聯苯醚 / Hexabromodiphenyl ether			5	n.d.	-
七溴聯苯醚 / Heptabromodiphenyl ether			5	n.d.	-
八溴聯苯醚 / Octabromodiphenyl ether			5	n.d.	-
九溴聯苯醚 / Nonabromodiphenyl ether			5	n.d.	-
十溴聯苯醚 / Decabromodiphenyl ether			5	n.d.	-
鹵素 / Halogen					
鹵素 (氟) / Halogen-Fluorine (F) (CAS No.: 14762-94-8)	mg/kg	參考BS EN 14582:2007, 以離子層析儀分析. / With reference to BS EN 14582:2007. Analysis was performed by IC.	50	n.d.	-
鹵素 (氯) / Halogen-Chlorine (Cl) (CAS No.: 22537-15-1)			50	n.d.	-
鹵素 (溴) / Halogen-Bromine (Br) (CAS No.: 10097-32-2)			50	n.d.	-
鹵素 (碘) / Halogen-Iodine (I) (CAS No.: 14362-44-8)			50	n.d.	-

Preliminary

號碼(No.) : CE/2014/44950 日期(Date) : 2014/04/30 頁數(Page) : 5 of 14

南亞塑膠工業股份有限公司



NAN YA PLASTICS CORPORATION

新北市泰山區南林路102號

NO. 102, NANLIN ROAD, TAISHAN DIST., NEW TAIPEI CITY, TAIWAN

備註(Note) :

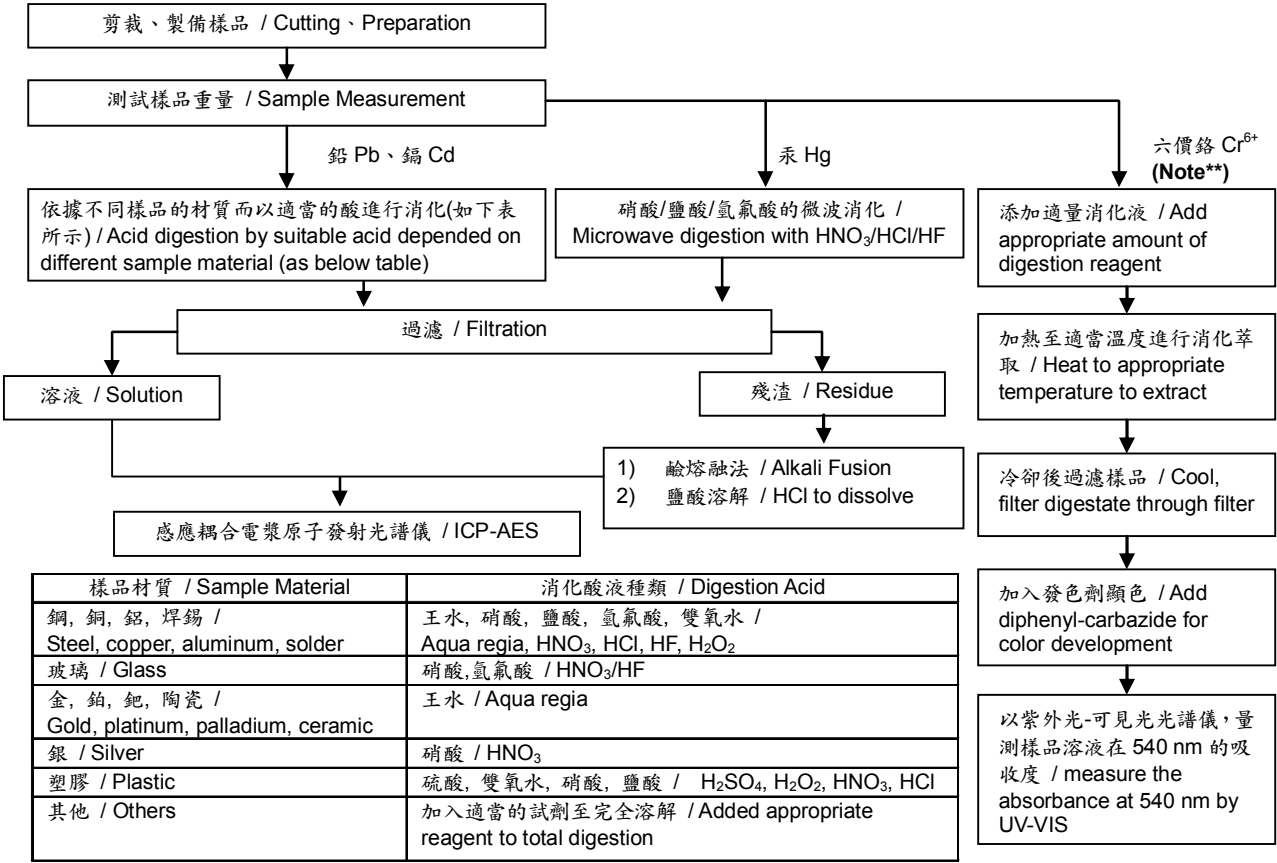
1. mg/kg = ppm ; 0.1wt% = 1000ppm
2. n.d. = Not Detected (未檢出)
3. MDL = Method Detection Limit (方法偵測極限值)
4. "-" = Not Regulated (無規格值)

Preliminary

南亞塑膠工業股份有限公司
NAN YA PLASTICS CORPORATION
新北市泰山區南林路102號
NO. 102, NANLIN ROAD, TAISHAN DIST., NEW TAIPEI CITY, TAIWAN



- 1) 根據以下的流程圖之條件，樣品已完全溶解。(六價鉻測試方法除外) / These samples were dissolved totally by pre-conditioning method according to below flow chart. (Cr⁶⁺ test method excluded)
- 2) 測試人員：楊登偉 / Name of the person who made measurement: Climbgreat Yang
- 3) 測試負責人：張啓興 / Name of the person in charge of measurement: Troy Chang



Note** (For IEC 62321)

- (1) 針對非金屬材料加入鹼性消化液，加熱至 90~95℃ 萃取。 / For non-metallic material, add alkaline digestion reagent and heat to 90~95℃.
- (2) 針對金屬材料加入純水，加熱至沸騰萃取。 / For metallic material, add pure water and heat to boiling.

Preliminary

號碼(No.) : CE/2014/44950 日期(Date) : 2014/04/30 頁數(Page) : 7 of 14

南亞塑膠工業股份有限公司



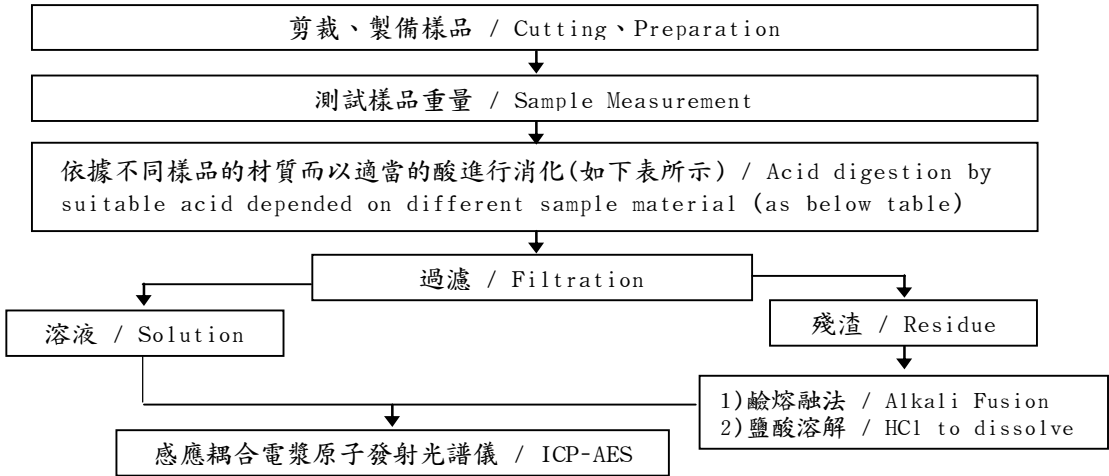
NAN YA PLASTICS CORPORATION

新北市泰山區南林路102號

NO. 102, NANLIN ROAD, TAISHAN DIST., NEW TAIPEI CITY, TAIWAN

- 1) 根據以下的流程圖之條件，樣品已完全溶解。 / These samples were dissolved totally by pre-conditioning method according to below flow chart.
- 2) 測試人員：楊登偉 / Name of the person who made measurement: Climbgreat Yang
- 3) 測試負責人：張啓興 / Name of the person in charge of measurement: Troy Chang

元素以 ICP-AES 分析的消化流程圖
(Flow Chart of digestion for the elements analysis performed by ICP-AES)



鋼,銅,鋁,焊錫 / Steel, copper, aluminum, solder	王水,硝酸,鹽酸,氫氟酸,雙氧水 / Aqua regia, HNO ₃ , HCl, HF, H ₂ O ₂
玻璃 / Glass	硝酸,氫氟酸 / HNO ₃ /HF
金,鉑,鈀,陶瓷 / Gold, platinum, palladium, ceramic	王水 / Aqua regia
銀 / Silver	硝酸 / HNO ₃
塑膠 / Plastic	硫酸,雙氧水,硝酸,鹽酸 / H ₂ SO ₄ , H ₂ O ₂ , HNO ₃ , HCl
其他 / Others	加入適當的試劑至完全溶解 / Added appropriate reagent to total digestion

Preliminary

號碼(No.) : CE/2014/44950 日期(Date) : 2014/04/30 頁數(Page) : 8 of 14

南亞塑膠工業股份有限公司

NAN YA PLASTICS CORPORATION

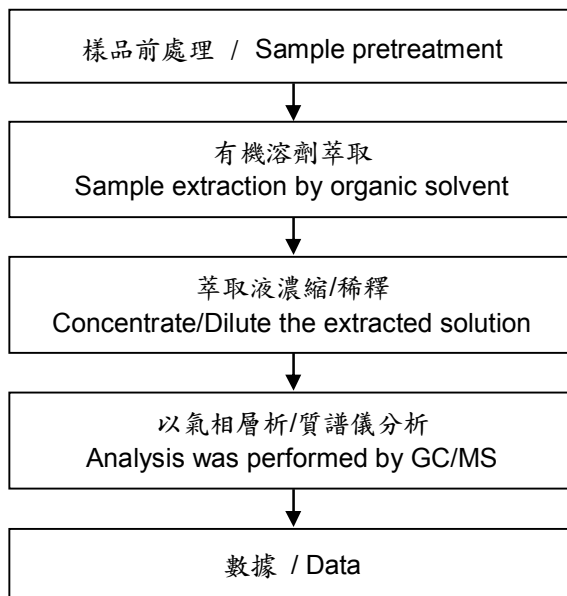
新北市泰山區南林路102號

NO. 102, NANLIN ROAD, TAISHAN DIST., NEW TAIPEI CITY, TAIWAN



氯化石蠟分析流程圖 / Chlorinated Paraffins analytical flow chart

- 測試人員：曾勃鈞 / Name of the person who made measurement: Barry Tseng
- 測試負責人：張啓興 / Name of the person in charge of measurement: Troy Chang



Preliminary

號碼(No.) : CE/2014/44950 日期(Date) : 2014/04/30 頁數(Page) : 9 of 14

南亞塑膠工業股份有限公司

NAN YA PLASTICS CORPORATION

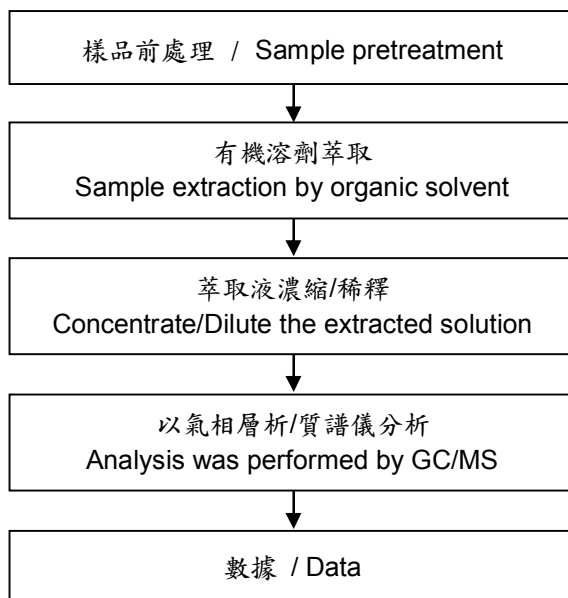
新北市泰山區南林路102號

NO. 102, NANLIN ROAD, TAISHAN DIST., NEW TAIPEI CITY, TAIWAN



多氯奈分析流程圖 / PCNs analytical flow chart

- 測試人員：曾勃鈞 / Name of the person who made measurement: Barry Tseng
- 測試負責人：張啓興 / Name of the person in charge of measurement: Troy Chang



Preliminary

號碼(No.) : CE/2014/44950 日期(Date) : 2014/04/30 頁數(Page) : 10 of 14

南亞塑膠工業股份有限公司

NAN YA PLASTICS CORPORATION

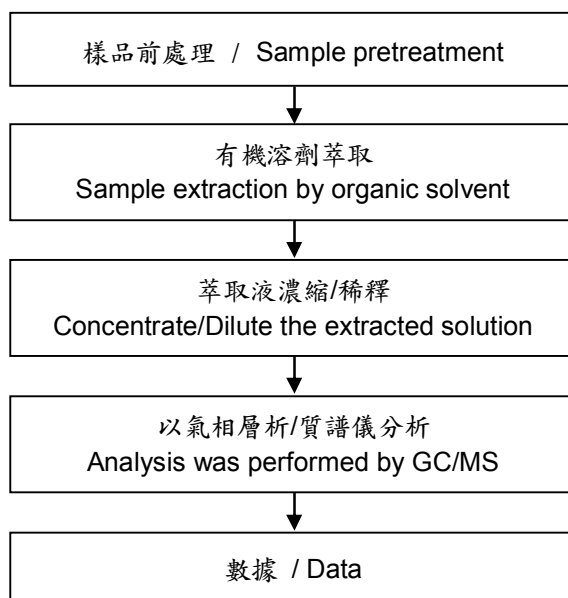
新北市泰山區南林路102號

NO. 102, NANLIN ROAD, TAISHAN DIST., NEW TAIPEI CITY, TAIWAN



多氯三聯苯分析流程圖 / PCTs analytical flow chart

- 測試人員：曾勃鈞 / Name of the person who made measurement: Barry Tseng
- 測試負責人：張啓興 / Name of the person in charge of measurement: Troy Chang



Preliminary

號碼(No.) : CE/2014/44950 日期(Date) : 2014/04/30 頁數(Page) : 11 of 14

南亞塑膠工業股份有限公司

NAN YA PLASTICS CORPORATION

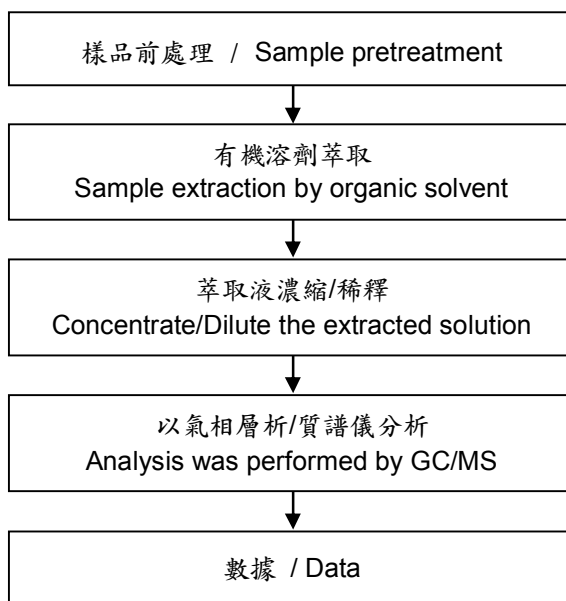
新北市泰山區南林路102號

NO. 102, NANLIN ROAD, TAISHAN DIST., NEW TAIPEI CITY, TAIWAN



多氯聯苯分析流程圖 / PCBs analytical flow chart

- 測試人員：曾勃鈞 / Name of the person who made measurement: Barry Tseng
- 測試負責人：張啓興 / Name of the person in charge of measurement: Troy Chang



Preliminary

號碼(No.) : CE/2014/44950 日期(Date) : 2014/04/30 頁數(Page) : 12 of 14

南亞塑膠工業股份有限公司

NAN YA PLASTICS CORPORATION

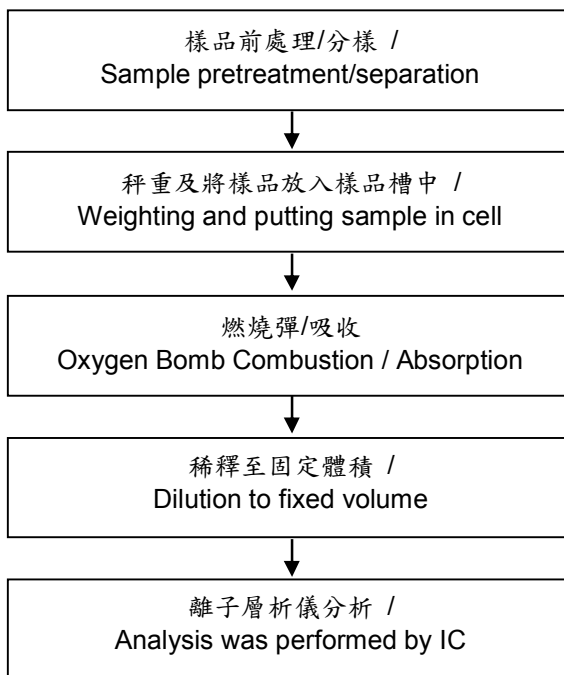
新北市泰山區南林路102號

NO. 102, NANLIN ROAD, TAISHAN DIST., NEW TAIPEI CITY, TAIWAN



鹵素分析流程圖 / Analytical flow chart of halogen content

- 測試人員：陳恩臻 / Name of the person who made measurement: Rita Chen
- 測試負責人：張啓興 / Name of the person in charge of measurement: Troy Chang



Preliminary

號碼(No.) : CE/2014/44950 日期(Date) : 2014/04/30 頁數(Page) : 13 of 14

南亞塑膠工業股份有限公司

NAN YA PLASTICS CORPORATION

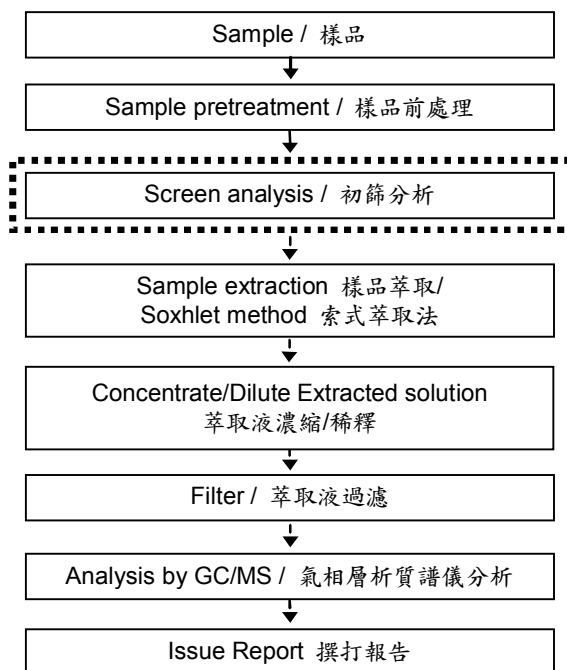
新北市泰山區南林路102號

NO. 102, NANLIN ROAD, TAISHAN DIST., NEW TAIPEI CITY, TAIWAN



多溴聯苯/多溴聯苯醚分析流程圖 / PBB/PBDE analytical FLOW CHART

- 測試人員：翁賜彬 / Name of the person who made measurement: Roman Wong
 - 測試負責人：張啓興 / Name of the person in charge of measurement: Troy Chang
- 初次測試程序 / First testing process —————>
- 選擇性篩檢程序 / Optional screen process>
- 確認程序 / Confirmation process - - ->



Preliminary

號碼(No.) : CE/2014/44950 日期(Date) : 2014/04/30 頁數(Page) : 14 of 14

南亞塑膠工業股份有限公司

NAN YA PLASTICS CORPORATION

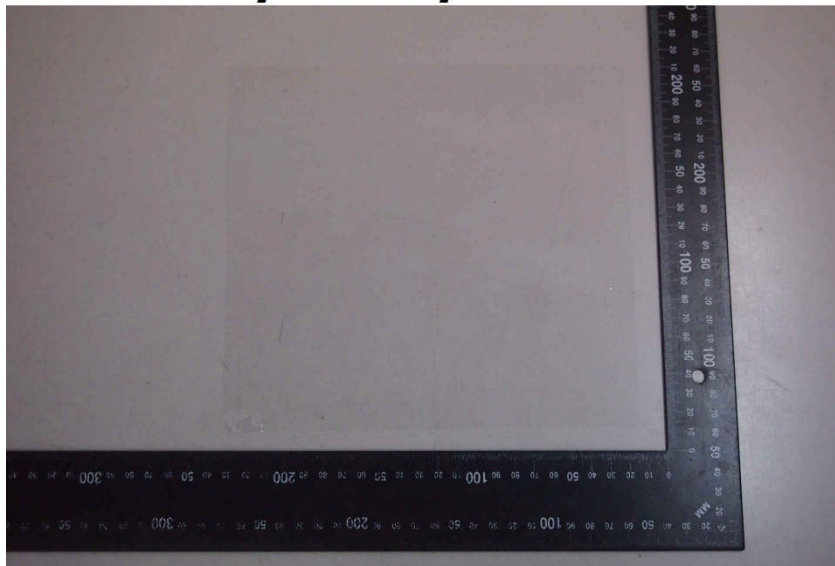
新北市泰山區南林路102號

NO. 102, NANLIN ROAD, TAISHAN DIST., NEW TAIPEI CITY, TAIWAN



* 照片中如有箭頭標示，則表示為實際檢測之樣品/部位。 *
(The tested sample / part is marked by an arrow if it's shown on the photo.)

CE/2014/44950



** 報告結尾 (End of Report) **